

Echoes

by Charlotte Mendez Correa (R) & Maria Ravelli (L)



Charlotte Mendez Correa and Maria Ravelli (The Netherlands, born 1995) are a creative duo, based in Amsterdam.

The two started working together in 2021. Charlotte is a **photographer**, she specializes in documentary portraiture. Maria has a background in both **graphic design** and **philosophy**.



The first series of Echoes consists of 6 works in different sizes. In the coming years the duo will address new themes, by creating new photographs and developing different shapes, but still using their special technique. This will be done in their own initiative, but also on **commission** and in **collaboration**.

With their latest series of work **Echoes**, the duo questions individuality in universality. How it can be that body parts as the universal building blocks of every human body, at the same time ensure that all those bodies are unique. By paying attention to details and thereby slowing down time, Echoes aims to show how **uniqueness is always present**. In order to emphasize this duality the artworks are translucent, engaging in a mystical interaction with its environment.

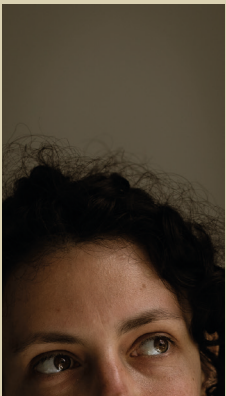


Echoes

Listen 70 x 50



Peek 100 x 55



Touch 100 x 70



Sense 70 x 60



Compile 100 x 70



Follow me 70 x 45

Follow Me

2024
70 x 45 cm (each)
price on request

All works are made from the same materials: organic cotton and ayous wood. The level of translucency depends on how the artwork is positioned in relation to the wall.



Echoes

Listen

2024

70 x 50 cm

price on request

All works are made from the same materials: organic cotton and ayous wood. The level of translucency depends on how the artwork is positioned in relation to the wall.



Echos

Sense

2024

70 x 60 cm

price on request

All works are made from the same materials: organic cotton and ayous wood. The level of translucency depends on how the artwork is positioned in relation to the wall.

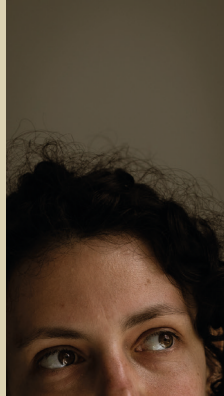


Echos

Peek

2024
100 x 70 cm
price on request

All works are made from the same materials: organic cotton and ayous wood. The level of translucency depends on how the artwork is positioned in relation to the wall.



Echos

Compile

2024

100 x 70 cm

price on request

All works are made from the same materials: organic cotton and ayous wood. The level of translucency depends on how the artwork is positioned in relation to the wall.



Echos

Touch

2024
100 x 70 cm
price on request

All works are made from the same materials: organic cotton and ayous wood. The level of translucency depends on how the artwork is positioned in relation to the wall.



Echos



Echos



Echoes



Studio visit by appointment.
Contact us for more information and
works on commission.

Charlotte Mendez Correa

photographer
+31 (0)6 50 747 333
charlottemendez.photography@gmail.com
@charlottemendez.studio

Maria Ravelli

designer
+31 (0)6 48 247 147
mariaravellistudio@gmail.com
@mariamariaravelli

Echos